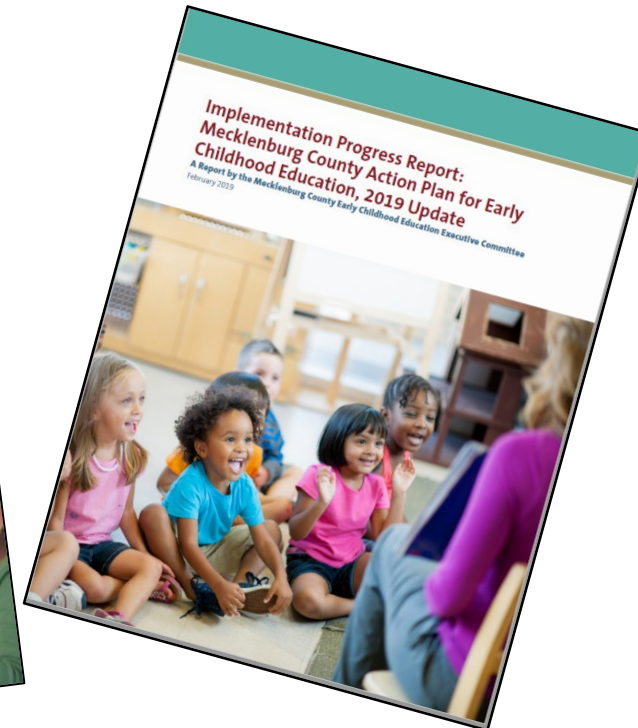
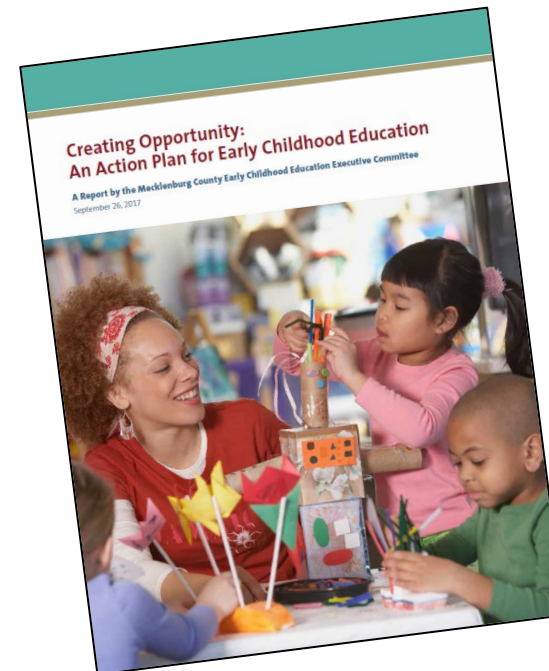




Mecklenburg County, NC **Business Leadership Jump Starts:** An Action Plan for Early Childhood Education



December 9, 2021

Overview

Introduction:

- Mecklenburg County & Business Leadership for B-5
- Business Leaders & 5-Point Plan
- Business Leaders and & Talent Development
- Business Leaders & Taking BIG Strides for Kids



Introduction

Business Leadership: The Road to ECE Action

It takes a village (& Innovation)

- In 2014, a Harvard University/UC Berkeley study ranked Charlotte 50th of 50 major cities – no upward mobility
- Divisions by race, by income
- Born poor, stay poor
- In February 2016, Trevor Fuller, then Chair of the Board of County Commissioners state of the county address:
all children – from birth to age 5 – have access to quality early childhood education that will provide life-long benefits
- In the fall of 2016, the Board of County Commissioners passed a resolution (B-5 important, develop and advance a community vision and plan)
- The Charlotte Executive Leadership Council (CELC) – a group of 24 Charlotte CEOs, \$500,000 for a 2-phase study (plan and steps to implement)

Business Leaders & Commissioners

- The status quo is not ok, we need better
- Charlotte Executive Leadership Council (CELC) seed funding
- County Manager appointed a broad-based ECE Committee, including **business leaders**, county commissioners, public school superintendent, public school pre-k director (NC Pre-K), child care centers, Head Start, Charlotte Bilingual Preschool, CCR&R, Smart Start, higher education (community colleges and UNC Charlotte), faith community, public health director, local philanthropy, and community advocates
- **Important to Business Leaders:** Accountable investments; public transparency; ECE workforce talent development (i.e., building a pipeline of high-quality ECE teachers in child care settings); access to high-quality child care and pre-k

ECE Plan Development – the Road to Action

In 2017, the Executive Committee:

- Met 13 times, including 3 half-day retreats
- Examined the County ECE landscape (e.g. less than 1/3rd of 4 year-old children had access to public pre-k, long child care subsidy waiting list)
- Considered opportunities, challenges, and costs
- Discussed lessons learned from other communities
- Developed recommendations

Solicited Community Views:

- **County-wide Poll**,
May 16 – June 13, 2017
- **12 focus groups**, (2 in Spanish)
March – August 2017
(business leaders, parents, providers, faith community, higher education, TA providers, etc.)

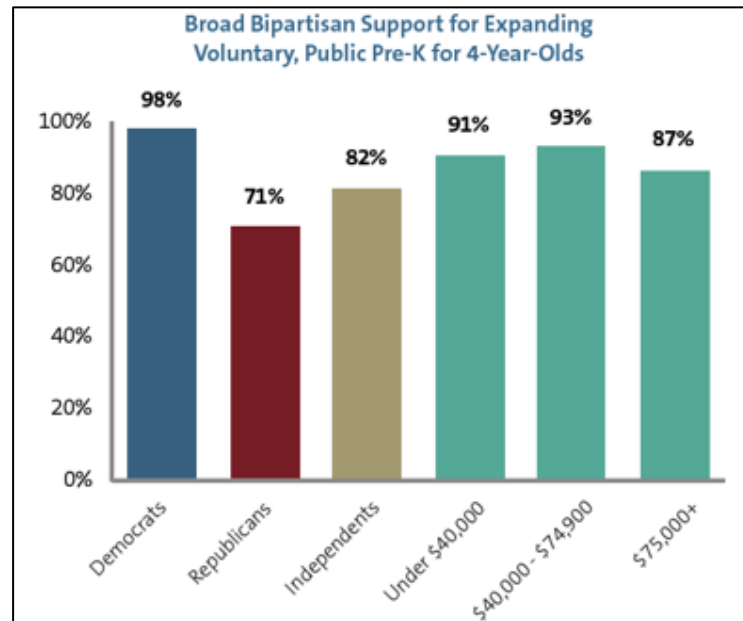
From the beginning, the plan needed to be paid for.

Willing to Pay \$10 More in Taxes Per Month

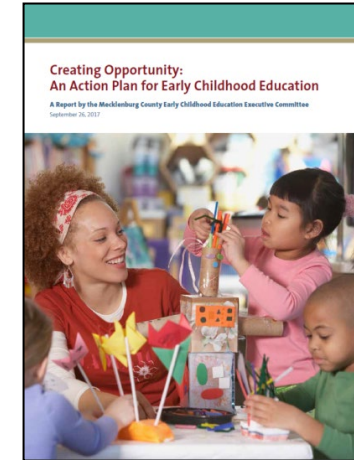
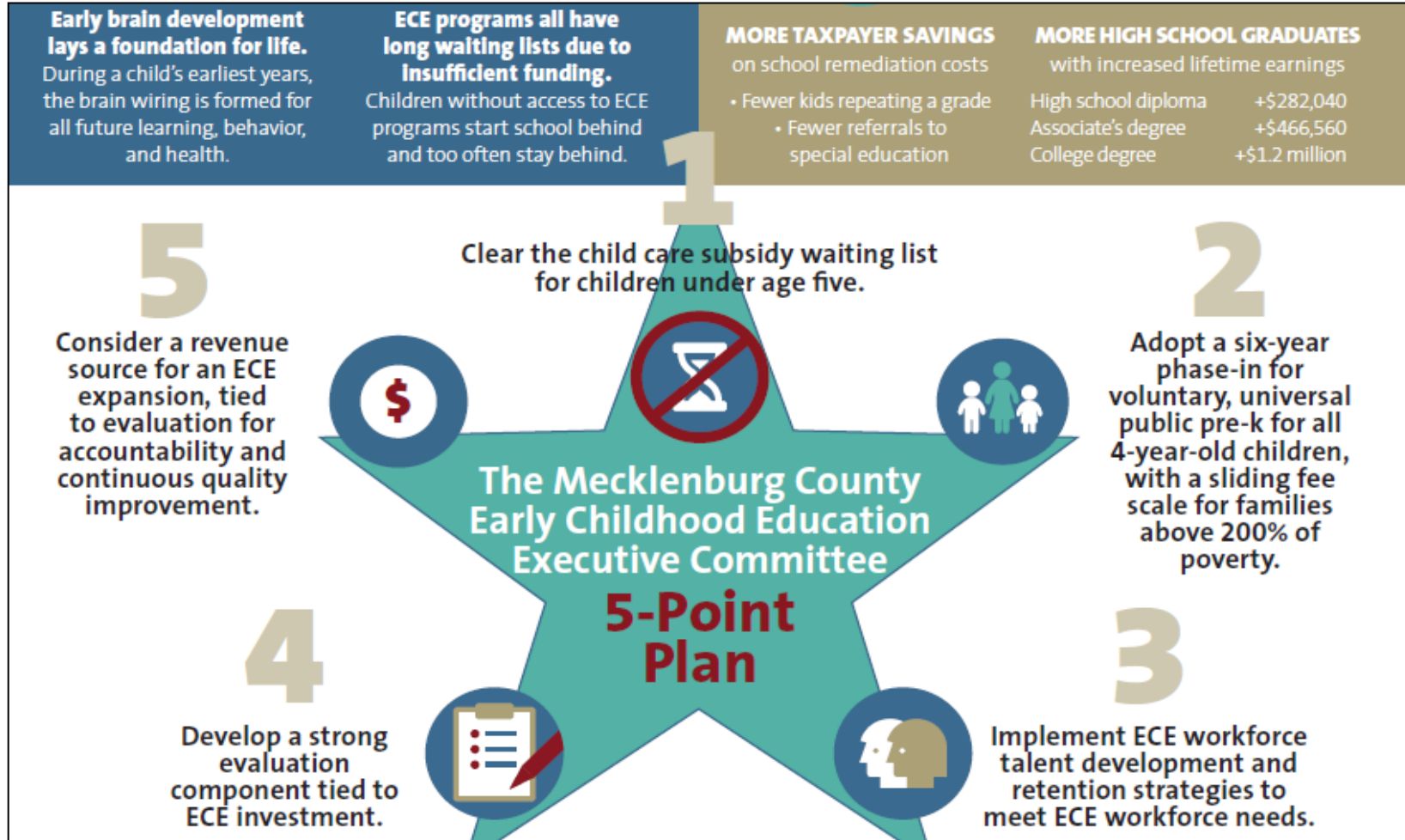
- **72%** yes to expand access to high-quality child care
- **71%** yes to support voluntary, universal public pre-k

Willing to Pay \$20 More in Taxes Per Month

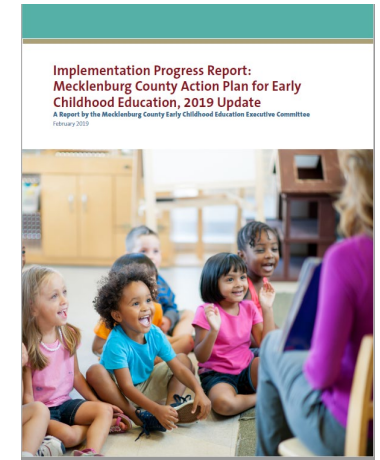
- **71%** yes to expand access to high-quality child care
- **65%** to support voluntary, universal public pre-k



5-Point Plan Released in September 2017



[Report Released:](#)
September 2017



[Report Released:](#)
February 2019

Action: County Board of Commissioners

- **June 2018:** \$9M for 33 public preschool classrooms in child care centers; \$6M to reduce child care waiting lists B-5
- **2019:** \$7M increase (36 more MECK Pre-K classrooms); \$14M for B-5 child care)
- **Today:** 105 MECK Pre-K classrooms in [46 child care centers](#). Universal. B-3 Review/COVID challenges.

Business Community Investment:

Public-Private Partnership Supporting an ECE Pipeline for MECK Pre-k and High-Quality Child Care

Higher Education Tuition, Fees & Related Support

- UNCC B-K Support (lead teacher requirement for MECK Pre-k/NC Pre-K)
- UNCC B-K Child Care Assistance
- UNCC BA tuition and support
- CPCC AA/AAS tuition and support
- CPCC, ECE Recruiter (2 positions)

Cost: \$1.25M (FY20) - \$1.3M (FY24)

Note: Assumes tuition, part-time child care at a 5-star family child care home (\$3,865) for ½ the teachers, \$2,000 for transportation and \$1,250 for books and materials.

18 private companies
\$6.2 million for higher education support for ECE teachers
 Tuition and Access Supports
 Over next 5 Years

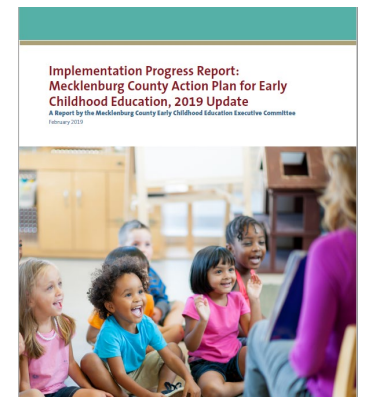
| | |
|--------------------------------|------------------------------|
| Albemarle Corporation | Foundation for the Carolinas |
| Atrium Health | Ingersoll Rand |
| Bank of America | Howard R. Levine Foundation |
| Barings, LLC | Leon Levine Foundation |
| John M. Belk Endowment | Merancas Foundation |
| Brighthouse Financial | Novant Health |
| Charlotte Merchants Foundation | Pricewaterhouse Coopers |
| Coca Cola Consolidated | C.D. Spangler Foundation |
| Duke Energy | Wells Fargo |

June 4, 2019 Announcement:

<https://www.mecknc.gov/news/Pages/Pre-KPrivate-Donations-.aspx>



Michael Marsicano, President & CEO, Foundation for the Carolinas 6/4/19



Report Released February 2019

Not Just Another Report, But an Action Plan!

Business Leadership: Taking BIG Strides for Kids!

