



**Learn & Grow**

*Alaska's Commitment to Quality Early Care & Learning*

# 2017-2018 PROGRESS REPORT

Recognizing Quality  
Early Care & Learning  
in Alaska

# WHAT IS LEARN & GROW?

Learn & Grow, Alaska's Quality Recognition and Improvement System (QRIS), supports early childhood education programs in improving the quality of their care.

To parents, high-quality child care is vital for their child's success. For programs, providing high-quality care is their goal. Learn & Grow brings these needs together in a system designed to improve and foster the success of our children.



The Learn & Grow system provides programs with tools and training focused on high-quality activities:

1. Promoting positive teacher-child interactions;
2. Using age-appropriate curriculum and activities;
3. Developing teacher skills;
4. Creating nurturing learning environments.

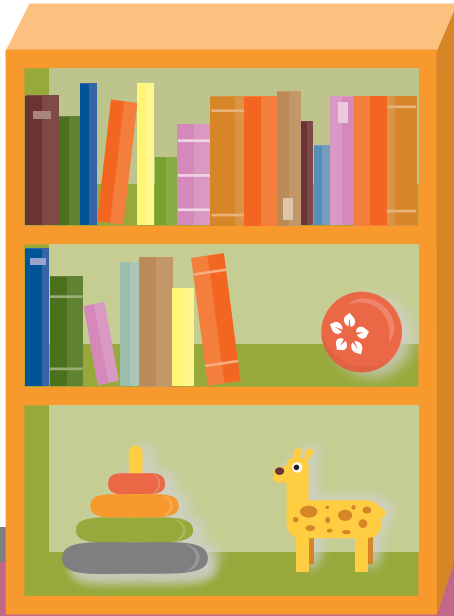
There are five levels of quality, each with a unique set of standards and activities to help a program continue to improve.

Learn & Grow is getting results.

*“With the training, coaching, and professional development opportunities in Learn & Grow, I feel really proud of the changes our program has gone through. Professional growth has stabilized the program as a whole. Families stay. Teachers stay, bringing the continuity of care our kids are entitled to.”*

– Robin O’Mara, Director  
Joy Child Development Center

# SUCCESSES



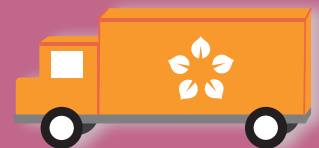
2017

- Learn & Grow launches Levels 1 and 2 to provide more children access to high-quality child care
- 92 programs enroll in Learn & Grow, giving families confidence their child is getting a strong foundation
  - 58 programs achieve Level 1



2018

- 149 licensed child care programs across Alaska are enrolled in Learn & Grow, advancing quality statewide
  - 122 programs achieve Level 1
  - 15 programs achieve Level 2
- 365 educators increase their skills through Learn & Grow





# WHAT'S NEXT?

- Learn & Grow (Levels 1 & 2) will expand to include Head Start, Early Head Start and licensed school-age programs.
- Learn & Grow will continue its collaboration with the Alaska Department of Health and Social Services Child Care Program Office and the Alaska Department of Education and Early Development to ensure qualified coaching and technical assistance is available to early childhood educators.
- The early childhood education system and Learn & Grow will share a vision of **quality** for all early childhood education program types in Alaska.
- Learn & Grow Levels 3, 4, and 5 will become available to programs by 2020.

## Learn & Grow

3350 Commercial Dr. Suite 203, Anchorage, Alaska 99501  
(907) 265-3105 or toll free (844) 563-3230  
[info@aklearnandgrow.org](mailto:info@aklearnandgrow.org) | [www.aklearnandgrow.org](http://www.aklearnandgrow.org)

housed & managed by  
**thread** connecting  
early care & education  
to alaska

